

## Polished Brass (PB)



### A warm accent

- A classic polished and lacquered finish.
- Finish will age and tarnish over time, developing a unique character.

## Durability



## Satin Brass (SB)



### Soft pops of colour

- Lightly brushed on a polishing wheel for a contemporary look.
- To keep Satin Brass looking stunning year-round, keep dry and clean regularly with a soft cloth.

## Durability



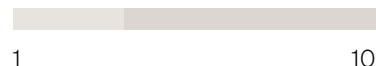
## Unlacquered Polished Brass (UPB)



### Classic aged charm

- A classic polished and unlacquered finish.
- Designed to age gracefully and naturally, the unlacquered polish will wear through use to develop distinct colour and a timeless aged look.

## Durability



## Unlacquered Satin Brass (USB)



### Contemporary meets classic

- Lightly brushed on a polishing wheel for a contemporary look.
- This modern unlacquered finish will age naturally over time to offer seamless application in both classic and contemporary spaces.

## Durability



## Antique Brass (AB)



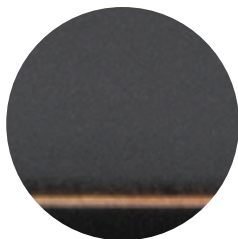
### Earthy undertones

- Each product in this finish is hand aged, meaning each product has its own distinct variation and depth of colour, reflecting a mix of lighter and darker finishes.
- This unique finish is designed to wear and age naturally over time, developing beautiful variations in the depth of colour.

## Durability



## Antique Copper (AC)



### A great heritage look

- Each product in this finish is hand aged, meaning each product has its own distinct variation and depth of colour.
- Designed to age, this finish will continue to wear and form distinct characteristics that look beautiful at every stage of its life.

## Durability



## Matt Black (MB)



### Timeless all rounder

- This highly-durable finish is achieved through powder-coating or an ageing process depending on the product.

## Durability



## Chrome Plate (CP)



### Sleek and adaptable

- Chrome plating not only looks stunning but is incredibly durable.
- This finish will remain at its best for years to come with occasional cleaning to maintain its lustre and brightness.

## Durability



## Satin Chrome (SC)



### Modern and refined

- We achieve this finish by carefully brushing Chrome Plate to remove shine and develop a sleek satin finish.
- Occasional cleaning will keep this highly-durable finish looking its best for years to come.

## Durability



## Rumbled Nickel (RN)



### Character filled

- This unique finish is achieved through traditional methods to create something truly special.
- Nickel-plating is aged before each product is 'rumbled' with small stones to reveal glimpses of the nickel through the antique finish.

## Durability



Since 1982

# TRADCO

Defining the Details

## Polished Nickel (PN)



### Elegant neutral

- A highly durable finish that is warmer than chrome.
- Highly polished nickel-plate gives this finish its beautiful depth of colour.
- Regular cleaning will maintain the lustre of this finish.

## Durability



## Satin Nickel (SN)



### Understated and chic

- Soft to the touch and exhibiting warm hues.
- To achieve this finish, nickel-plated brass is very lightly finished, before being plated with satin nickel.

## Durability



## Other finishes you may come across

**BR** - Brown

**BL** - Black

**WH** - White

**IV** - Ivory

**PM** - Polished Metal

**AF** - Antique Finish

**PVD** - Anti-tarnish Brass

**EB** - Electro-plated Brass